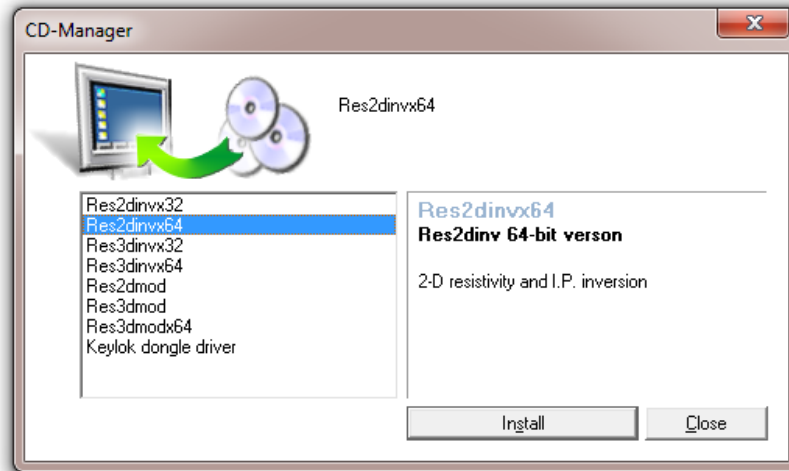


CD-ROM contents and installation instructions for RES2DINV and RES3DINV

Installation

When the CD is inserted in the CD drive, the following setup manager should be displayed.



Click the appropriate item in order to install RES2DINV program; followed by the RES3DINV, RES2DMOD and RES3DMOD programs. If you have the Keylok USB dongle, click on the 'Keylok dongle driver' option to install the driver for the dongle (see last two pages for more details).

CD-ROM contents

In the CD-ROM, the various software packages are arranged in the following folders.

RES2DINV - Contains the RES2DINVx32 software set-up file.

RES3DINV - Contains the RES3DINVx32 software set-up file.

RES2DMOD.WIN - Contains the free RES2DMOD software package and manual for Windows.

RES3DMOD - Contains the free RES3DMOD software set-up file.

RES3DINVx64 - Contains the 64-bit version of RES3DINV software set-up file. This software requires the Win XP-64 or Vista-64 or 7-64 or 8-64 operating system.

RES3DMODx64 - Contains the set-up file for 64-bit version of RES3DMOD. This version requires a dongle with the 3D license.

RES2DINVx64 - Set-up file for the 64-bit version of RES2DINV.

KEYLOK_SYSTEM_DRIVER - Contains the driver for the Keylok hardware key (dongle).

LECTURE_NOTES - Free lecture note on 2D and 3D electrical imaging in PDF format.

ABSTRACTS - Extended abstracts of a few papers on electrical imaging by M.H.Loke.

SHAREWARE - Contains several shareware programs for text and graphics editing.

WIN_Updates - Latest versions of RES2DINV, RES2DINVx32, RES2DINVx64, RES3DINV, RES3DINVx32, RES3DINVx64, RES2DMOD, RES3DMOD and RES3DMODx64 programs.

HELP_FILES - Contains updates for the Windows Help files for software.

MANUALS - Contains the manuals in PDF format for RES2DINV, RES3DINV, RES2DMOD and RES3DMOD. The manuals have the detailed instructions on the different options in the programs.

For users who have already installed the RES2DINV and RES3DINV software on their computers, you need not reinstall the programs. To update the software copy the RES2DINVx32.EXE, RES2DINVx64.EXE, RES3DINVx32.EXE, RES3DINVx64.EXE files into the folders/subdirectories where you have installed the programs so that they will overwrite the older versions.

Important Notice : We cannot provide free replacements for lost or stolen dongles that were in the possession of the end user. Please contact geotomosoft@gmail.com for the cost of a new dongle if it was lost or stolen. Dongles should be treated in the same way as any physical assets such as computers and insurance should be taken out in case it is lost or stolen.

Software updates

From time to time updates to the RES2DINV and RES3DINV programs, as well as the free RES2DMOD/RES3DMOD programs and lecture notes, will be released. The latest versions are available at the 'Downloads' page of the www.geotomosoft.com website. Please check the website site to ensure that you have the latest versions.

Note for RES2DINVx64, RES3DINVx64 and RES3DMODx64

These programs require a 64-bit version of Windows X/Vista/7/8/10. The computer must have at least 4 GB RAM, while 8 GB (or more) is recommended. The default version of Windows 7 is usually 64-bit unless the user specifically requests a 32-bit version.

Windows Vista/7

The proper driver should be installed when you click the 'Keylok USB Driver' on the setup menu.

Under Vista, the program might report there is insufficient hard-disk space, although the drive has many GBs of free space. If this happens, try the following.

First turn off the User Account Control (UAC).

- 1). In the Control Panel, click the icon to open User Accounts.
- 2). Click Turn User Account Control off. If you are prompted for an administrator password or confirmation, type the password or provide confirmation.
- 3). Select the Use User Account Control (UAC) to help protect your computer check box to turn on UAC, or clear the check box to turn off UAC, and then click OK..

Next change the program privilege level (Windows Vista/7/8/10)

- 1). Right click on the program shortcut (eg. Res2dinvx64).
- 2). Click the 'Properties' menu option.
- 3). Next click the 'Compatibility' tag.
- 4). Under the 'Privilege Level' section, check the 'Run this program as an administrator privileges' box. This allows the program to write the temporary files to the hard-disk.

Windows 8 : Use the Install_Win8.exe program in the KEYLOK_SYSTEM_DRIVER folder in the CD.

Windows 10 : Use the Install.exe program in the KEYLOK_SYSTEM_DRIVER folder in the CD.

If you still have problems, download the latest version of the driver from the www.keylok.com web site.

It is also recommended that you disconnect the computer from the Internet while running a long inversion. Sometimes Windows automatically restart the computer after downloading system updates. You should also turn off the automatic screen savers and computer power management programs as they might shut down the computer during a long inversion.

Use of RES3DINVx64 program with the RES2DINV dongle

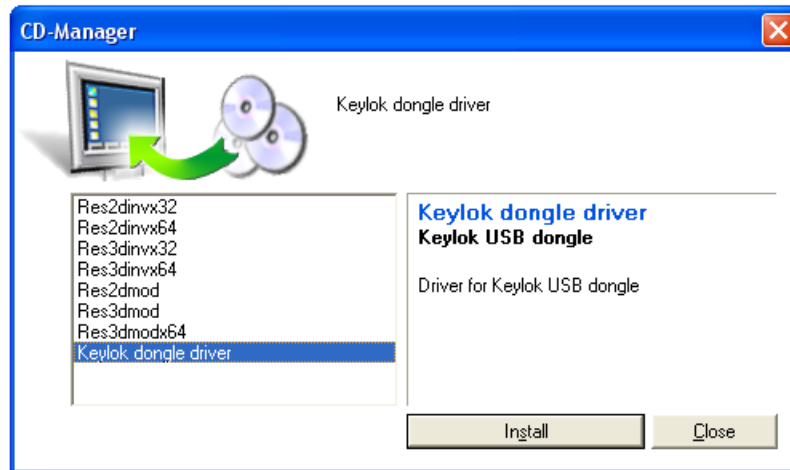
If you had bought the license RES2DINV program only, you can still use the RES3DINVx64 program with a limit of 800 electrodes for the survey grid. If you had purchased the license for RES3DINVx64 Basic, the maximum amount of RAM that the program can access is 8 GB, and the maximum mesh size for the finite-difference or finite-element method is 1.2 million nodes. If the dongle has the license for RES3DINVx64 Professional, the limit is 192 GB. The maximum mesh size depends on the RAM available, for example with 128GB it supports up to about 12 million nodes.

Registration

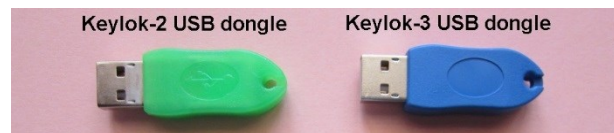
Please register by email by using the file REGISTER.TXT or RESGISTER.DOC provided with the RES2DINV software package. Fill in this form and email it to geotomosoft@gmail.com.

Instructions for installing driver for USB dongle

Insert the CD into the computer CD drive. You should see the menu below.

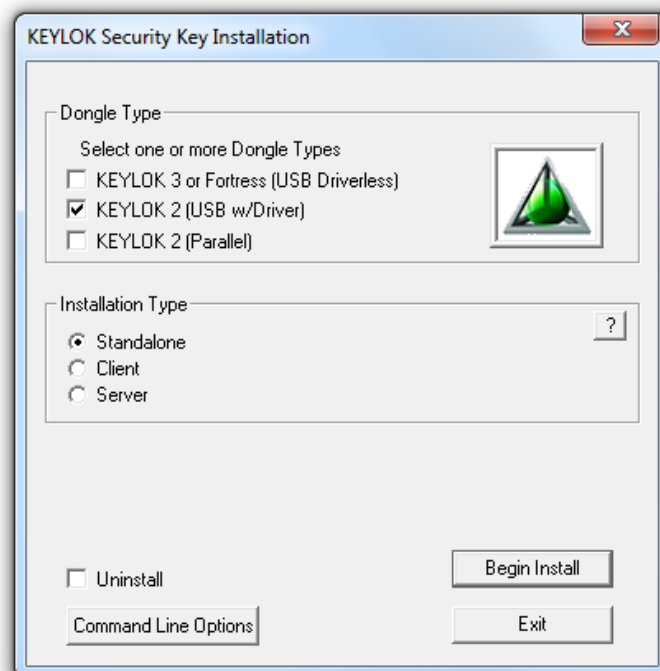


The two types of dongles that are currently in use are shown below, the green Keylok-2 and blue Keylok-3 dongles.



Instructions for green Keylok-2 dongle

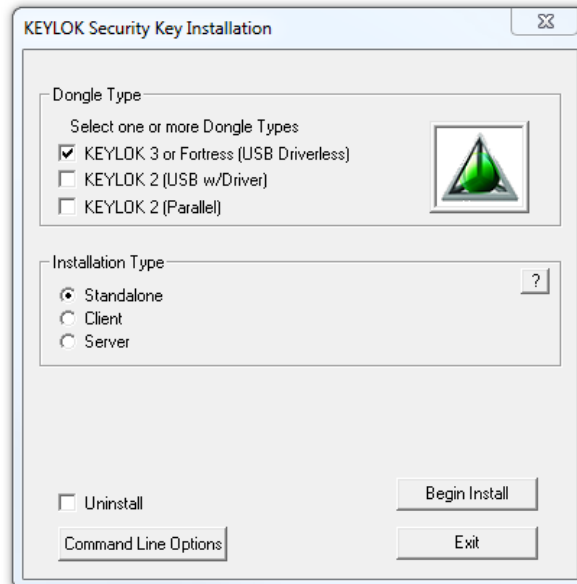
Make sure the green USB dongle is NOT attached to the computer. Double click the 'Keylok dongle driver' option in the above menu. This will start up the dongle driver installation program to install the driver for the dongle. You will see program menu as shown below.



Click the 'KEYLOK 2 (USB w/Driver)' and 'Standalone' options and then 'Begin Install', and the driver should be automatically installed. It should also prompt you to attach the green USB dongle. Next restart the computer.

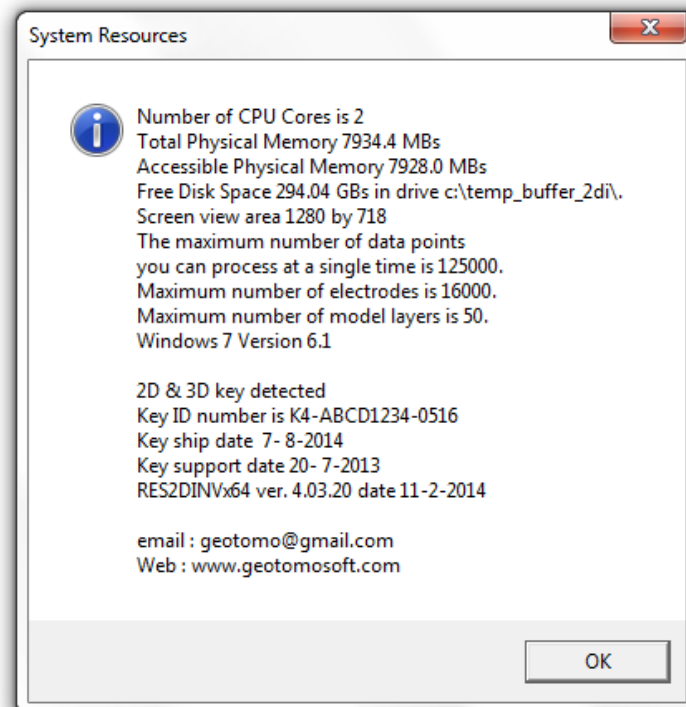
Instructions for blue Keylok-3 dongle

If you have the blue Keylok-3 dongle, there is no need to install a driver. Just plug it in a USB port, and wait for about 1 minute while Windows registers it. If you are using an old version (before November 2016) of the RES2DINVx64 or RES3DINVx64 program, you need to download a newer version that supports this dongle from the 'Downloads' page of the www.geotomosoft.com website. If it is not detected by the program, try another USB port. In the event the dongle is still not detected, try running the driver installation program by clicking the 'Keylok dongle driver' option on the CD-Manager menu. This will start up the driver installation program and display the following screen. Click the 'KEYLOK 3 or Fortress (USB Driverless)' and 'Standalone' options as shown above. Then click 'Begin Install' to install the driver.



Checking the dongle

With the USB dongle attached to the computer, start the RES2DINVx64 program and it should show a starting dialog box similar to that shown below.



If the Res2dinv program shows a 'SemiDemo' in the box, make a screen dump and email it to geotomosoft@gmail.com or support@geoelectrical.com